

STOCKHOLMS
MUSIKPEDAGOGISKA
INSTITUT

DEGREE AWARDS
SINGLE SUBJECT COURSES
PROFESSIONAL DEVELOPMENT

Stockholm University College of Music Education



2014



DEGREE AWARDS

Music Pedagogy Program

5 Bachelor of Music Education 180 ECTS

5 Graduate Diploma, Music Education 120 ECTS

Logonomy Program

7 Graduate Diploma in Logonomy 120 ECTS

SINGLE STUDY COURSES

10 Arranging and Conducting Ensembles 7,5 ECTS

10 The Living Voice 7,5 ECTS

10 Ergonomics for Instrumentalists and Singers 7,5 ECTS

10 Aesthetic Learning Processes 10 ECTS

10 Improvisation Methodology 3 ECTS

10 Instrumental Teaching in Group 7,5 ECTS

10 Early Childhood Music and Movement 10 ECTS

10 Score Analysis and Conducting 30 ECTS

10 Eurhythmics for Dancers 5 ECTS

11 Voice Function in Popular Music Styles 10 ECTS

11 Creative Dance – the Body as the Medium 1-2-3 10 ECTS

PROFESSIONAL DEVELOPMENT

12 Voice Academy

12 Voice Yoga

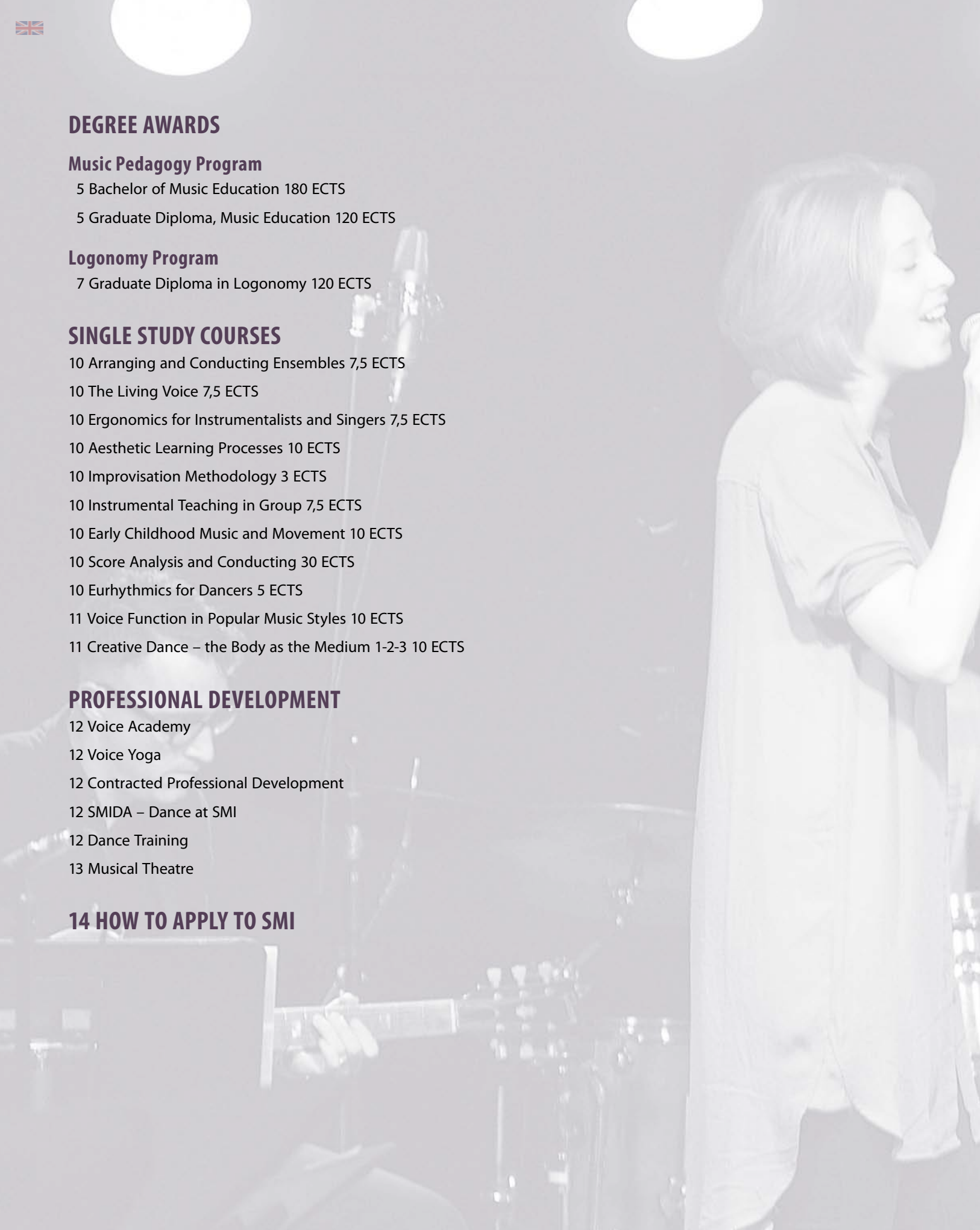
12 Contracted Professional Development

12 SMIDA – Dance at SMI

12 Dance Training

13 Musical Theatre

14 HOW TO APPLY TO SMI



Do you want to Teach an Instrument, Song or Voice and Speech?

SMI is proud to offer a unique education providing a solid formal pedagogical competency and capability to teach in various contexts, school forms and situations.

As an SMI student you will receive a pedagogical, artistic, professional education from a range of competent and experienced teachers. Your courses will intensify and broaden your artistic abilities, both individually and in collaboration with others. You will be tutored in didactics and methodology both via your own teaching and through organized practicum studies. You will learn to compose and arrange music and together with fellow students plan and deliver pedagogical artistic projects. You will experience new technology and become acquainted with current research and new pedagogical advancements preparing you for your career. After graduation you will possess the skills and competencies for teaching both individually and in group and ensembles, at various levels of aptitude, to a range of ages and situations. You may after graduation at SMI complement your degree at another tertiary institution and attain formal qualification for music subject teaching in Swedish compulsory and gymnasium schools.

Do you want to become a Musical Theatre Artist?

SMI's one-year preparatory course in musical theatre is designed to develop you towards working as an independent musical artist with an emphasis on song, musical theatre and acting.

We offer you a course with practical training as well as functional and personal methods for working with musical theatre and stage performance. We develop your stage conviction and your ability to make conscious artistic choices. During your year we compile a personal material portfolio representing you as an artist when applying for roles or further education.

Welcome to your education at SMI!



DEGREE AWARDS

Music Pedagogy Program

PROFILES

Brass (trumpet, trombone, tuba, french horn)

Electric/Double Bass

Electric Guitar

Acoustic Guitar (nylon/steel-string)

Piano

Percussion

Song

Strings (violin, viola, cello, double bass)

Woodwinds (flute, oboe, saxophone, clarinet, bassoon)

The Bachelor of Music Education 180 ECTS requires 3 years full-time study with 120 ECTS in subject units within the chosen profile and 60 ECTS combining general educational sciences with practicum studies. The degree provides formal qualification as a music teacher specialising in the teaching an instrument or song individually, in groups and ensembles at all levels of aptitude. You may after graduation apply to complement your degree with 90 ECTS at another tertiary institution, and in so doing achieve qualification to teach in the Swedish compulsory school and gymnasium.

The Bachelor of Music Education 180 ECTS

GENERAL EDUCATIONAL SCIENCES 30 ECTS

Pedagogy 10 ECTS

Communication and Leadership 7,5 ECTS

Didactics and Collaboration 10 ECTS

Scientific Theory and Research Methods 2,5 ECTS

SUBJECT UNITS 120 ECTS

Didactics – Instrument/Song Methodology 25 ECTS

Principle Instrument/Song 25 ECTS

Music in Theory and Practice 20 ECTS

Piano and Voice Studies 12,5 ECTS

Musicology and Cultural History 7,5 ECTS

Digital Tools 5 ECTS

Profile Courses 10 ECTS

Independent Degree Project 15 ECTS

PRACTICUM STUDIES 20 ECTS

INDIVIDUAL CHOICE 10 ECTS

The Graduate Diploma, Music Education 120 ECTS is open to those who have an undergraduate qualification in music performance or equivalent through previous study in the area of music combined with relevant and outstanding professional career experience. The degree requires 2 years full-time study with 80 ECTS subject units and 40 ECTS combining general educational sciences with practicum studies.

Read more: smpi.se/program

Graduate Diploma, Music Education 120 ECTS

GENERAL EDUCATIONAL SCIENCES 25 ECTS

Pedagogy 10 ECTS

Communication and Leadership 5 ECTS

Didactics and Collaboration 7,5 ECTS

Scientific Theory and Research Methods 2,5 ECTS

SUBJECT UNITS 80 ECTS

Didactics – Instrument/Song Methodology 25 ECTS

Principle Instrument/Song 5 ECTS

Music in Theory and Practice 10 ECTS

Piano and Voice Studies 10 ECTS

Digital Tools 5 ECTS

Profile Courses 10 ECTS

Independent Degree Project 15 ECTS

PRACTICUM STUDIES 15 ECTS





Logonomy Program

The Graduate Diploma in Logonomy 120 ECTS offers extensive and broad competency for working as a voice and speech pedagogue. Logonomists work with prophylactic vocal care, in personal communication skills and with voice and speech in artistic situations. The degree requires 2 years full-time study with 80 ECTS in subject units and 40 ECTS in general educational sciences.

Entry requirements: For entry to the Graduate Diploma in Logonomy 120 ECTS you are required to hold previous degree qualifications of 120–180 ECTS within a pedagogical/artistic area such as song, theatre, logopaedics, education or similar related subject areas at the tertiary level. Further you should have a minimum of 4 years' documented experience of working as a teacher within the vocal area, alternatively documented experience/studies within artistic, practical pedagogical vocal work, such as:

- Pedagogical studies/work experience
- Studies/work experience involving your own voice
- Studies/work experience of the voice used in communicative situations
- Studies/work experience of artistic, interpretative work with the voice.

You may for instance have worked as a drama/theatre pedagogue, choir leader, voice/song teacher, music teacher, course instructor, singer, actor, storyteller, priest/pastor, rhetoric, program leader etc.

Read more: smpi.se/program

Graduate Diploma in Logonomy 120 ECTS

GENERAL EDUCATIONAL SCIENCES 40 ECTS

Methodology and Didactics 22,5 ECTS

Methodology for Leadership and Communication 7,5 ECTS

Psychology and Pedagogy 7,5 ECTS

Scientific Theory and Research Methods 2,5 ECTS

SUBJECT UNITS 80 ECTS

Verbal Delivery 20 ECTS

Voice Training 10 ECTS

Rhetoric 7,5 ECTS

Body Awareness and Interpretation 7,5 ECTS

Stage Production 2,5 ECTS

Voice Anatomy and Physiology 7,5 ECTS

Phonetics and Voice Acoustics 10 ECTS

Independent Degree Project 15 ECTS







SINGLE STUDY COURSES

Read more: smpi.se/frikurser

SMI's Single Study Courses have both a didactical and artistic focus. You will find courses that expand and broaden your understanding within a chosen subject in music, as well as courses combining other aesthetical and artistic expressions. General admission requirements for

higher education must be met for entry to all courses. Some courses also require further qualifications. Links to course plans and course teachers are available from our website – please refer to the information under each course name.

Arranging and Conducting Ensembles 7,5 ECTS

The course aims to develop your knowledge in conducting and arranging for ensembles, so that you can work as a pedagogue with different ensemble constellations consisting of participants of various ages and musical abilities.

PERIOD 1/8th full-time, four Fridays and two Friday-Saturdays during fall 2014 – spring 2015, tentatively 9am–4pm

APPLY Deadline 15th April 2014

The Living Voice 7,5 ECTS

The course is designed for teachers in the compulsory school, gymnasium, pre-school, music/culture school or pedagogues in similar areas of work. It aims to develop your knowledge of the voice and to provide you with methods for a durable voice and a stimulating and expressive verbal communication.

PERIOD 1/8th full-time, five Fridays and two Friday-Saturdays during fall 2014 – spring 2015, tentatively 9am–4pm

APPLY Deadline 15th April 2014

Ergonomics for Instrumentalists and Singers 7,5 ECTS

The course aims to develop your knowledge of your personal bodily awareness in your daily actions. The course offers methods illustrating how an ergonomically durable approach to music-making can be fundamental to your personal, musical and pedagogical growth.

PERIOD 1/4th full-time, six Fridays during fall term 2014, tentatively 9am–4pm

APPLY Deadline 15th April 2014

Aesthetic Learning Processes 10 ECTS

The course is designed for teachers, pedagogues, teacher teams and others keen to develop varied interaction styles for teaching through visual arts, dance, drama and music. Focus is centred on pupils' own creativity and their ability to communicate their knowledge.

PERIOD 1/6th full-time, six Fridays and two Friday-Saturdays during fall 2014 – spring 2015, tentatively 9am–4pm

APPLY Deadline 15th April 2014

Improvisation Methodology 3 ECTS

The course aims to develop your teaching of pupils' music-making in different genres through improvisation as a method

PERIOD 1/10th full-time, four Fridays during spring term 2015, tentatively 9am–4pm

APPLY Deadline 15th April 2014

Instrument Teaching in Group 7,5 ECTS

The course is designed for instrumental teachers in music/culture schools or pedagogues in similar areas of work, with an interest for group-teaching. The course provides examples of instrumental group-teaching in order to illustrate and test general and instrument-specific group methodologies and didactical tools.

PERIOD 1/8th full-time, six Fridays during fall 2014 – spring 2015, tentatively 9am–4pm

APPLY Deadline 15th April 2014

Early Childhood Music and Movement 10 ECTS

The course is designed for teachers and pedagogues working with children in pre-schools, lower primary schools and music/culture schools. The course aims to provide methods for teaching that develop pupils abilities of expression through their own creativity with a focus on music and dance.

PERIOD 1/6th full-time, six Fridays and two Friday-Saturdays during fall 2014 – spring 2015, tentatively 9am–4pm

APPLY Deadline 15th April 2014

Score Analysis and Conducting 30 ECTS

The course is aimed to develop your competency as a musician and ensemble conductor with main focus on chamber and symphonic music. We analyse and discuss the scores of the master composers seen through aspects of conducting and musical elements.

Entry requirement: Higher education degree in music education or the equivalent, previous experience in choral/ensemble/orchestral conducting.

PERIOD 1/6th full-time, six Wednesdays/Saturdays 9am–12pm (nominate your choice of day in your application) and one Saturday 9am–4pm per term during the academic years 2014–15 and 2015–16

APPLY Deadline 15th April 2014

Eurhythmics for Dancers 5 ECTS

The course is designed for dancers and dance teachers with an interest for the Eurhythmics methodology and approaches. Methods for creating experience and understanding of music and it's building blocks in pedagogical or artistic work where music and dance consociate will be developed during the course.

PERIOD 1/4th full-time, five days (two Saturday-Sundays and one Saturday) during spring 2015, tentatively 9am–4pm

APPLY Deadline 15th April 2014

Voice Function in Popular Music Styles 10 ECTS

The course offers you the opportunity to expand your knowledge on song through current voice research. Lectures are combined with laborative demonstration, practical song exercises and discussions on teaching methodologies. Focus is given toward different styles within the popular music repertoire, for example rock/hard rock, pop, soul, jazz and musical theatre.

Entry requirements: Higher education studies in music education (song), music performance (song), logonomy or logopaedics or equivalent.

PERIOD 1/3rd full-time, four sessions Friday 3–6.30pm and Saturday 9.30am–4pm during spring 2015

APPLY Deadline 15th October 2014

Courses within the Degree Programs

Apart from the courses above, SMI can possibly offer placement in a course within the Bachelor of Music Education degree, according to availability and after separate agreement. See our website for further information on the courses that are eligible.

Creative Dance

– the Body as the Medium

The courses provide knowledge on dance pedagogy with focus on Creative Dance and dance as an art-form.

Emphasis is given to providing playful, stimulating and challenging methods for exploring, creating and learning with pupils. The courses consist of practical exercises in dance improvisation and dance composition, impulse and inspiration materials as well as self-study.

Creative Dance 1 10 ECTS

The course is aimed at developing and providing methods to teachers and pedagogues from various school forms and occupations who teach in Dance or who want to begin to use Dance in educative and artistic situations.

PERIOD 1/3rd full-time, Mondays and Tuesdays totalling ten days together during one term, tentatively 9am–4pm

APPLY Deadline 15th April 2014 for fall term course, 15th October for spring course

Creative Dance 2 – Dance in School and Society 10 ECTS

The course is an extension and expansion of Creative Dance 1.

The course is aimed at providing methods for using Dance in collaboration with other subject areas.

PERIOD 1/3rd full-time, Mondays and Tuesdays totalling ten days together during one term, tentatively 9am–4pm

APPLY Deadline 15th April 2014 for fall term course, 15th October for spring course

Creative Dance 3 – Body, Identity and Health 10 ECTS

The course is an extension and expansion of Creative Dance 1 and 2.

The course is aimed at providing teachers and pedagogues with methods that form a pedagogical occupation in Dance which promotes health and develops sense of worth and identity in pupils. Next course will be offered in the fall term of 2015.



PROFESSIONAL DEVELOPMENT

Read more: smpi.se/fortbildning

SMI offers shorter fee-based courses and seminar days as professional development. On offer are for instance Voice Academy's and SMIDA's courses but also several courses with a focus on early childhood learning. See our website for more information on our courses, which is updated continually.

Voice Academy

SMI's forum for the Voice in speech and song

Membership in Voice Academy entitles you to participate in SMI's array of lectures, master classes, open seminars and courses. You will be continually informed of the program on offer and receive discounts on most of the fees. Membership also provides a discount on renting SMI venues.

Read more: smpi.se/rostakademin

MEMBERSHIP 200SEK per year

BECOME A MEMBER by paying in to bankgiro 5773-9468

MARK your payment with "Röstakademin"

NOTIFY us of your application via SMI's Office

World Voice Day 16th April 2014! A global manifestation for voice and it's value to mankind. SMI and Voice Academy plan an event to mark the day! Look on the website for more information.

Voice Yoga

Voice yoga provides methods that in a safe and caring manner open doors to silenced rooms. To begin to breath, resonate and live inside your body is HUGE!

When energy is blocked, fatigue plagues our system. How do you develop a breathing consciousness? You will learn various yoga-based breathing techniques – pranayama – and how they affect us. Meditation for calming the soul and quelling thoughts, for providing the opportunity to pause – to let the body and soul rest and heal. To explore, discover and occupy areas of the body with help of resonance and tone in combination with gradual yoga motions. Voice yoga uses various motions to familiarize you with your body and to interpret what it communicates. Voice yoga can be modified to suit needs the body and soul have at any given time. We practice exercises gently and controlled, after your own condition and on your own terms.

TEACHER Ulrica Gulz

PERIOD Two days in the middle of August, tentatively 9am–4pm

FEE 2.495SEK (incl. VAT 499SEK)

APPLY Deadline 1st June 2014 directly to SMI's Office

Contracted Professional Development

SMI offers professional development through contracted courses designed to tailor to your needs, from shorter inspirational seminars and workshops to longer-term competence development strategies. Contact us and provide us with your professional development needs!

SMIDA – Dance at SMI

SMIDA is a network of pedagogues and teachers interested in developing pupils' expressional capabilities and creativity in dance. As a member of the network you will receive invitations to meetings, seminars, workshops, lectures and short courses.

Upcoming activities and professional development courses:

- **Dance Day** 29th April: "Dancing in the Street" with rehearsal 28th April
- **Dance Pilots:** Dance natural sciences, develop language and mathematical cognition – professional development for pre-school
- **Dance the UN Convention on the Rights of the Child**
- **Å la Halprin:** Dance workshops in Anna Halprin style

Dance Training

Morning training in Free Dance/Modern Dance with organic warm-up for your body's joints

Using gentle release techniques we focus on our suppleness, strength and pulse. We explore and play within various choreographic themes. Together in our group we improvise and develop small compositions. The music is taken from contemporary to folk music, with examples from many different styles and genres.

TEACHER Maria Nordlöw

PERIOD Six Wednesdays per term, 9–11am

FEE 1.450SEK (including VAT 290SEK)

APPLY Directly to SMI's Office

Single Study courses Eurhythmics for Dancers and Creative Dance 1-2-3, see pages 10 and 11

Read more: smpi.se/smida

Preparatory course in Musical Theatre

SMI's new one-year preparatory course in musical theatre is for those looking for methods to develop into an independent stage artist with an emphasis on song, musical theatre stage performance and acting. The course also suits those working on stage wishing to extend their competence and keep their contact with working commitments.

Song – Acting – Movement

Education in song is centred on developing a flexible and durable vocal technique which exposes your personality in various situations within all styles of musical theatre. You will learn through analysis of music and text how to make a conscious and personal interpretation. Course work in acting is founded on Method Acting and body awareness. Your personal development during the course year will strengthen your own stage expression as actor, singer and dancer. You will meet and work with guest lecturers in master classes who provide new aspects and offer new methods.

We prepare you for your career with a personal material portfolio with repertoire carefully chosen during the course to best reflect your personal artistry. After completion of the course you will be equipped to apply for work or higher education as a singer, actor or musical theatre artist, both within Sweden and internationally.

PERIOD Full-time study 28 weeks during academic year 2014–15. Campus studies tentatively 8.30am–12pm. Certain lectures may be conducted in English.

FEES 54.900SEK (incl. VAT 10.980SEK). Payment will be billed in four parts over the course duration. NB: This course is not eligible for public financial aid in Sweden.

SCHOLARSHIP You are eligible to apply for the Benny Andersson Scholarship (BAS) for musical theatre courses at SMI after acceptance. The scholarship offers up to 50% discount on the course fee.

APPLY Deadline 29th May 2014 by separate application form available from our website. Selection is determined through entrance testing.

Read more på smpi.se/musikal





HOW TO APPLY TO SMI

DEGREE PROGRAMS

Eligible to apply to SMI's degree programs are those with basic pre-requisite requirements for tertiary study as stipulated by the Swedish government. You are also required to have at least two years post-secondary studies or work experience in an area relevant to the degree program you are applying for. Our graduate diploma programs have further pre-requisite requirements, which are defined under the information on each program.

- Application is completed on a separate application form available from our website. The application, together with a recent passport photo or similar of the applicant, must be received by SMI no later than 15th April 2014.
- Selection is determined through entrance testing, held in Week 20. Please consult our website for more detailed information on the tests.
- Offers of acceptance will be made in writing by Week 24.

Application to SMI is free of charge. However, you will be charged 500SEK if you do not attend your entrance tests as called and have not cancelled your application by 25th April. Exception for the applicants own or close relations' illness can be made after the receipt of a doctor's certificate.

Application forms: smpi.se/ansokan

SINGLE STUDY COURSES

Eligible to apply to SMI's degree programs are those with basic pre-requisite requirements for tertiary study as stipulated by the Swedish government. Some courses also have further pre-requisite requirements, which are defined under the information on each course.

- Application is completed on a separate application form available from our website and must be received by SMI no later than 15th April/15th October 2014.

PREPARATORY COURSE IN MUSICAL THEATRE

Anyone is eligible to apply for the preparatory course in musical theatre.

- Application is completed on a separate application form available from our website. The application, together with a recent passport photo or similar of the applicant, must be received by SMI no later than 29th May 2014.
- Selection is determined through entrance testing. Please consult our website for more detailed information on the tests.
- Offers of acceptance will be made via e-mail after the entrance testing process is completed.

Application to SMI is free of charge. Supplementary entrance testing may be required before a decision can be made. Please consult our website for more information.





B



SMI – Stockholm University College of Music Education
SE-100 41 Stockholm
SWEDEN

Campus address: Eriksbergsgatan 8B, 3rd floor

Ph: +46-(0)8-611 05 02

Fax: +46 (0)8 611 52 61

www.smpi.se

info@smpi.se

Vice-Chancellor Ian Plaude

Director of Studies Bengt Olsson

Secretary of Studies Cattis Eriksson

